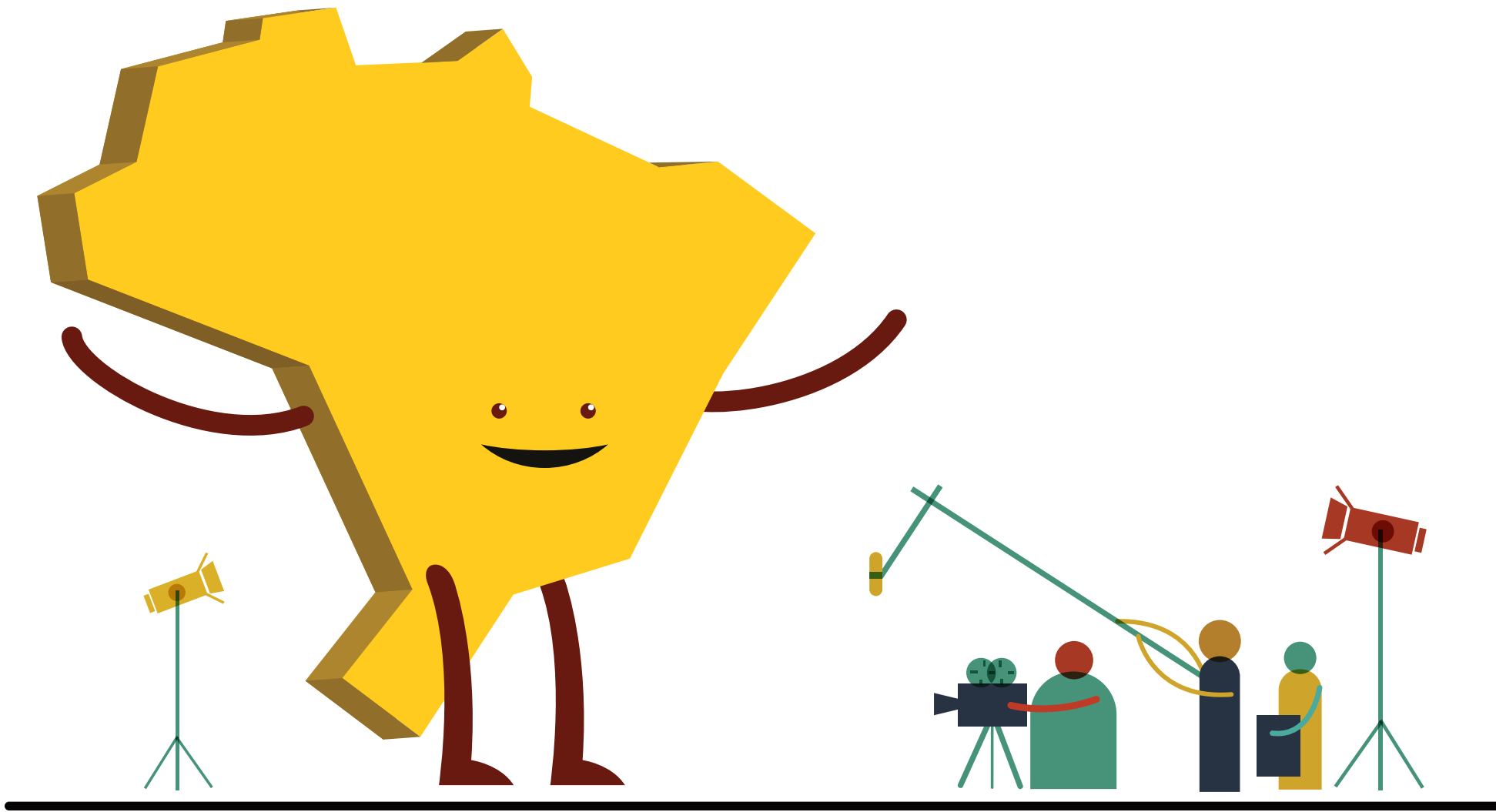


FILMBRAZIL

advertising production network

PRODUCTION SPECS IN BRAZIL



aporo

ApexBrasil

ancine

VISA REQUIREMENTS

The hired Brazilian company must submit a formal notice to ANCINE with detailed information about the technical crew involved. From there ANCINE will send a letter to the Brazilian Consulate requesting the VITEM II visa.

In case of agency or client personnel associated with the production, who are not part of the technical crew, a business visa is required.



ANCINE - National Cinema Agency is a regulatory agency whose responsibilities the promotion, regulation and supervision of the cinema and audiovisual market in Brazil. A special agency linked since 2003 to the Ministry of Culture, with headquarters in the Federal District and Central Office in Rio de Janeiro.

TALENTS & BUY OUT

In Brazil talents charge a daily rate separate from the charges associated with the broadcasting rights.

Brazilian Casting contracts are always for a determined period of time and territory/territories. Can be made for at least 1 week and up to 1 year.

The contract is made for up to 3 medias (i.e.: web, Paid TV, broadcast), does NOT apply to print, as that has to be negotiated separately.

CONDECINE FEES



DOES **NOT** APPLY
TO ADVERTISING
CAMPAIGNS THAT
WILL NEVER AIR IN
BRAZIL.

All TV programming, advertisement and feature films must be registered at ANCINE prior to airing.

There are **3 categories** of advertisement as defined by ANCINE and each has a different fee.

A BRAZILIAN COMMERCIALS	BRL 4.466,26 + TAXES ALL MEDIAS INCLUDED
B BRAZILIAN COMMERCIALS SHOT ABROAD	BRL 64.949,75 + TAXES ALL MEDIAS INCLUDED
C FOREIGN COMMERCIALS	BRL 250.210,57 + TAXES ALL MEDIAS INCLUDED

CONDECINE FEES



DOES **NOT** APPLY
TO ADVERTISING
CAMPAIGNS THAT
WILL NEVER AIR IN
BRAZIL.

A

BRAZILIAN COMMERCIALS

- **Requirement #1:** MUST be produced by a Brazilian production company registered at ANCINE.
- **Requirement #2:** MUST be shot by a Brazilian director or a foreign director based in Brazil for more than three years.
- **Requirement #3:** At least two-thirds of the production personnel MUST be Brazilians or foreigners based in Brazil for more than five years.
- ONLY one-third of the production personnel may be foreign.
- An exception allows a foreign director to co-direct with a Brazilian director. however, please note a foreign director cannot be part of the foreign personnel quota.

EXCEPTION

- A foreign director must co-direct with a Brazilian director, who MUST participate in the job's execution. Meaning that the Brazilian director will be on set, will receive a fee, and will sign the clapperboard with the foreign director.
- This exception only applies to companies that have been in business for more than five years and have at least 240 commercials registered at ANCINE.

CONDECINE FEES



DOES **NOT** APPLY
TO ADVERTISING
CAMPAIGNS THAT
WILL NEVER AIR IN
BRAZIL.

B

BRAZILIAN COMMERCIALS SHOT ABROAD

- **Requirement #1:** MUST be produced by a Brazilian production company registered at ANCINE.
- **Requirement #2:** MUST be shot by a Brazilian director or a foreign director based in Brazil for more than three years.
- **Requirement #3:** At least one-third of the production personnel MUST be Brazilian or foreigners based in Brazil for more than five years.

CONDECINE FEES

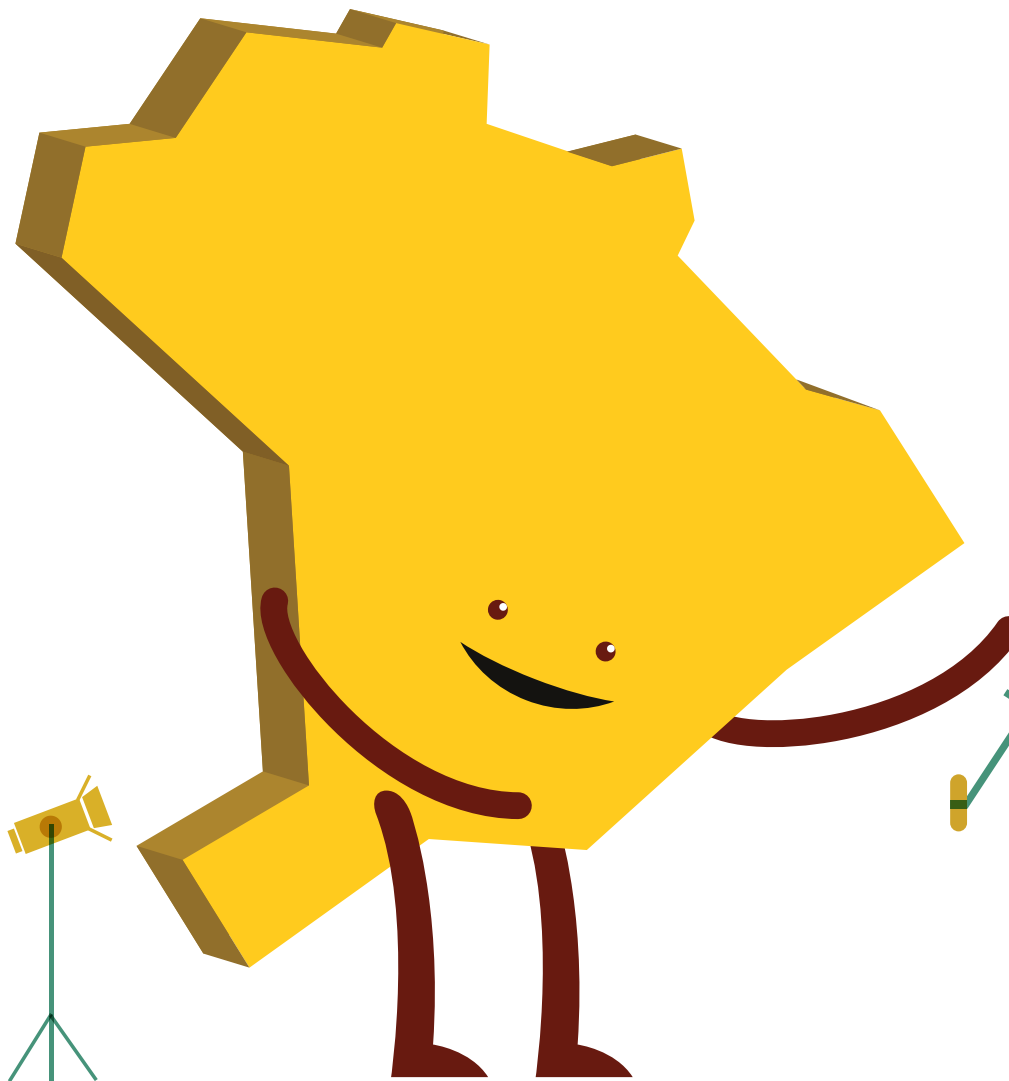


DOES **NOT** APPLY
TO ADVERTISING
CAMPAIGNS THAT
WILL NEVER AIR IN
BRAZIL.

C

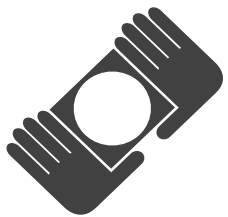
FOREIGN COMMERCIALS

- Audiovisual commercial that does not fit in the definition of a Brazilian commercial.



THANKS!

more info at filmbrazil.com



FILMBRAZIL

aporo

ApexBrasil

ancine